



*Welcome*





***“We provide resources that **conserve, protect, and enhance** the Sabino Canyon Recreation Area”***

*Friends of Sabino Canyon*



*The success of Friends of Sabino Canyon is measured by...*

*...our ability to **attract and grow financial resources** from our donor base...*

*... and the **timely deployment** of those resources toward **USFS priority capital projects and programs.***



# *WHY are we here tonight?*

- ❖ *Thank you for your ongoing support for our past projects...*
- ❖ *Officially announce our new 2023 projects...*
- ❖ *How to get your ideas, feedback, and comments to us...*



# Welcome and Thanks!

- ❖ *Our Special Guests*
- ❖ *Canyon Donors*
- ❖ *The Friend's Board*
- ❖ *The Friend's Past Board Members*
- ❖ *The Tohono Chul Crew and Carlos!*







## *Tonight...*

- *Past projects in the Canyon*
- *Our new 2023 projects*
- *Sabino Canyon –  
'Infrastructure and Visitor Use'*
- *What's next*
- *How to send us your ideas  
and comments*

*Our work in the  
Canyon...since  
1993!*





# *Gateway Plaza*





# *Informative Signage and Education Facilities*



*Shade*



*Work parties...well, for some...*

*Ok, everyone  
pitched in...*





## *Trail Construction*

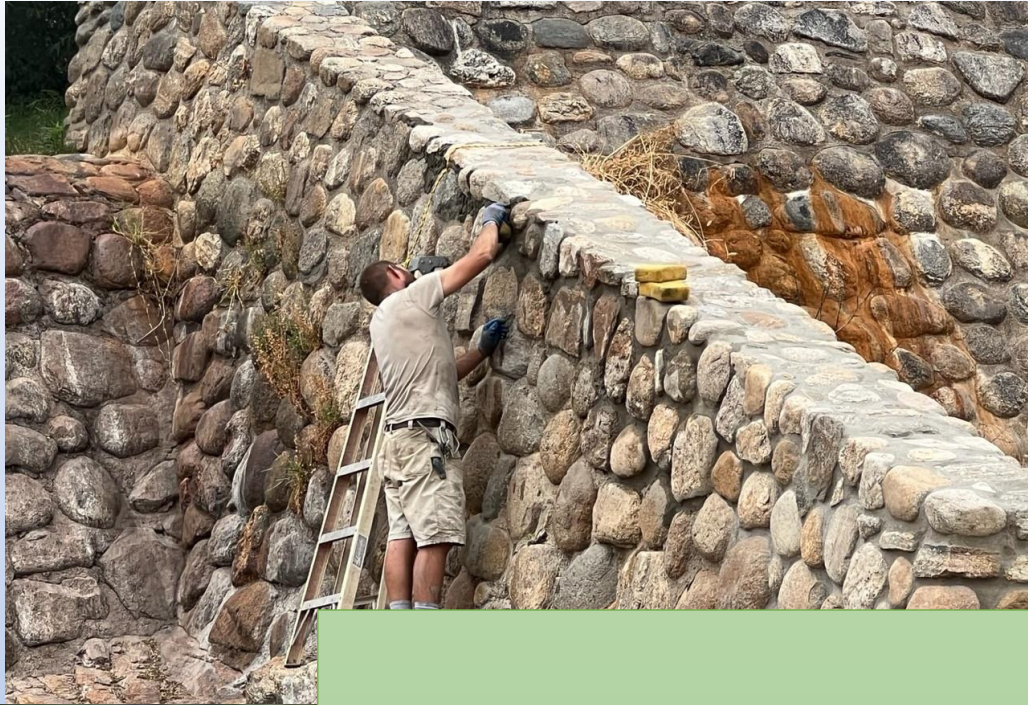
# *Ramadas- more shade*





*Darrel Klesch & Rodney-  
Canyon Stone Masons*





*Craftsmanship for the ages...*



*Benches*

# *The challenges...*

Buffelgrass  
is a  
wildfire  
waiting  
to  
happen.

We  
need you -  
**Beat Back  
Buffelgrass**

Saturday, Jan 24, 2015

To volunteer, sign up online at:  
[www.buffelgrass.org](http://www.buffelgrass.org)

Sponsored by Southern Arizona Buffelgrass Coordination Center.

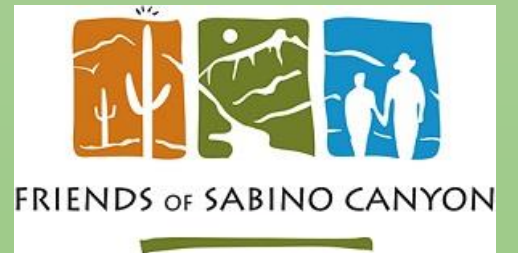


*What it  
takes...*





*Its all  
worth it  
in the  
end...*



# *Our new projects in 2023!*



# *‘Canyon Interpretive Outpost’*



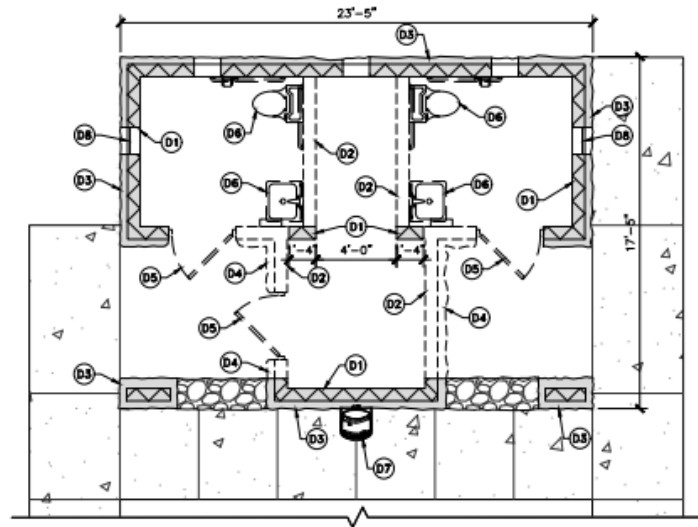
# Canyon Interpretive Outpost







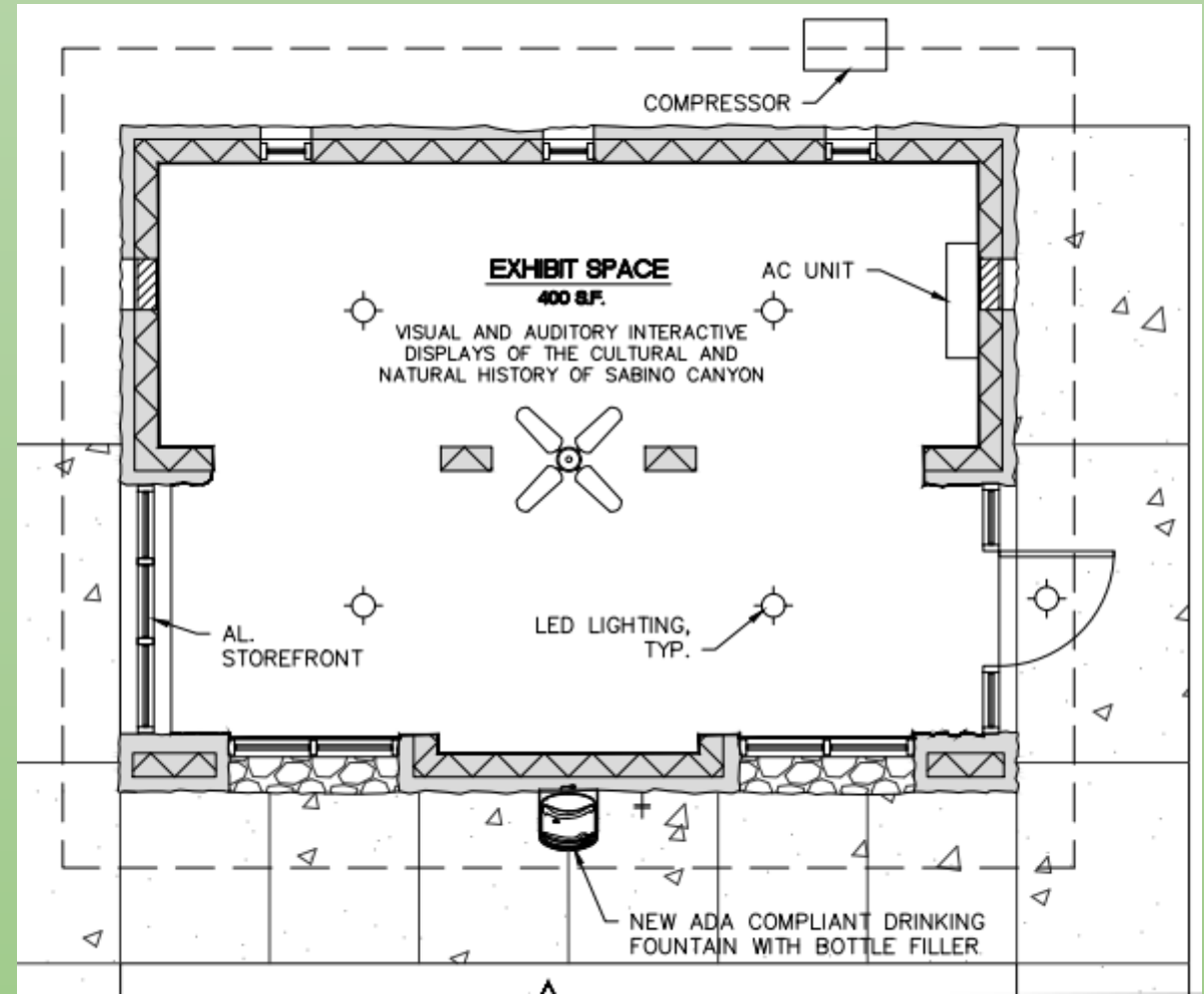
*Transform the exterior...*



**1 DEMOLITION FLOOR PLAN**  
SCALE: 1/8"=1'-0"

**DEMOLITION KEYNOTES**

- |   |  |
|---|--|
| D01 EXISTING WALL TO REMAIN                 | D05 EXISTING DOOR AND FRAME TO BE REMOVED                                |
| D02 REMOVE PORTION OF EXISTING MASONRY WALL | D06 REMOVE EXISTING PLUMBING FIXTURES, PIPING, ETC., AND CAP AS REQUIRED |
| D03 EXISTING ROCK VENEER TO REMAIN          | D07 EXISTING DRINKING FOUNTAIN TO REMAIN                                 |
| D04 REMOVE PORTION OF ROCK VENEER           | D08 EXISTING VENT TO REMAIN  |

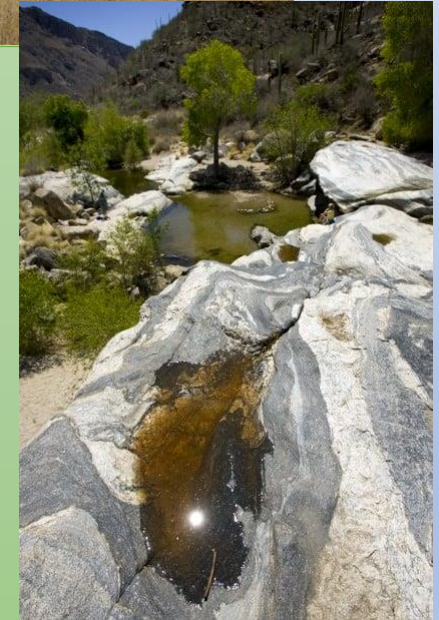


*Transform the interior space...*

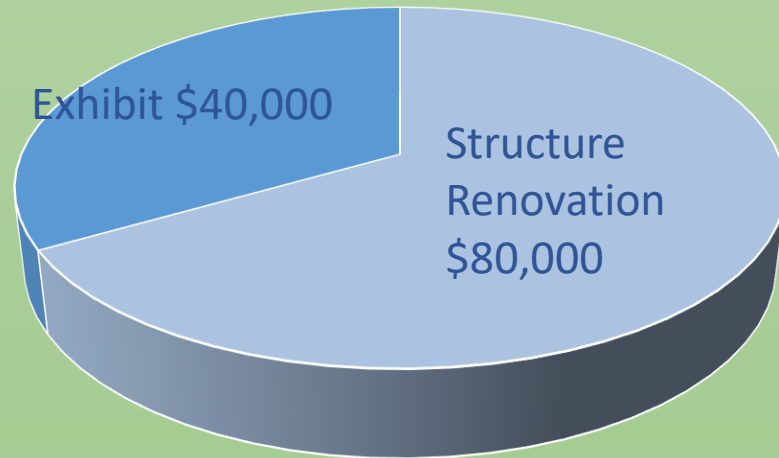
# Exhibits under Development



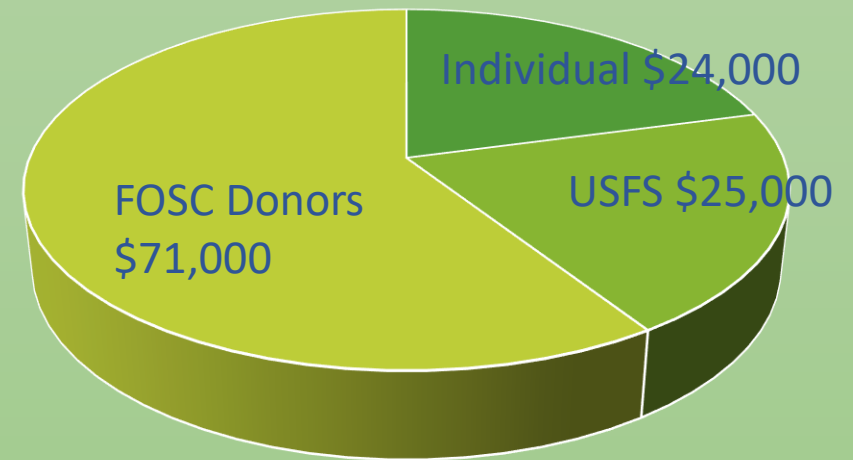
*Interpretive themes-  
ecological, cultural,  
historical...*



## Project Budget-



## Project Funds-



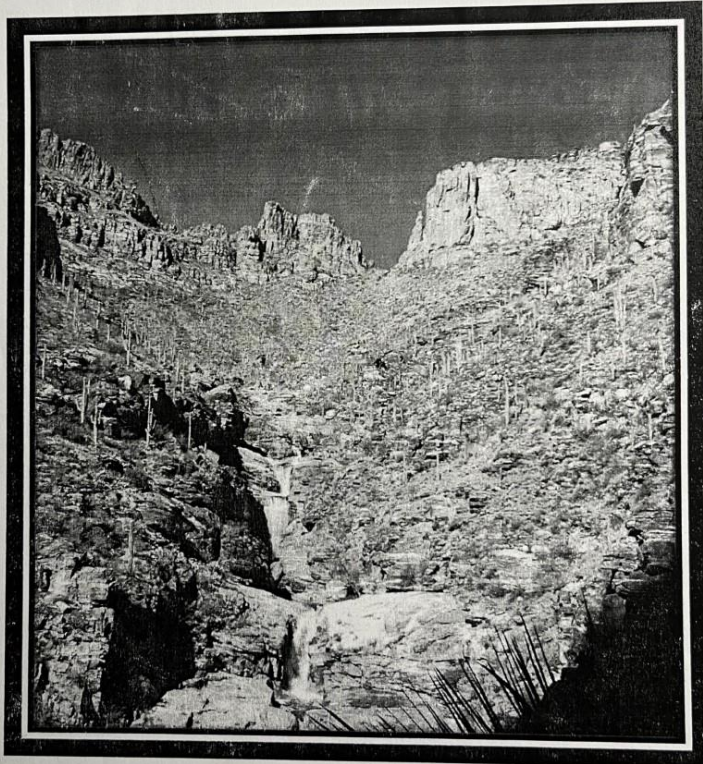
*Canyon Interpretive Outpost*

# *'Visitor Center Re-Imagined'*



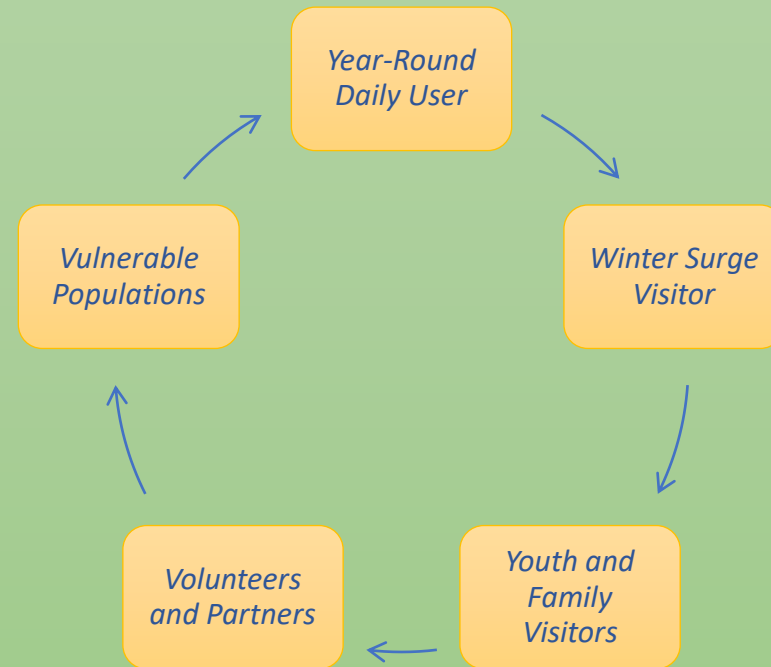
# SABINO CANYON

## SUSTAINABLE RECREATION CONCEPT PLAN



CORONADO NATIONAL FOREST – SANTA CATALINA RANGER DISTRICT – 2015

## 2015 Planning Process



- ✓ 723 Comments
- ✓ Survey Results
- ✓ Public meetings

## The 2015 Sustainable Recreation Concept Plan established an overall goal-

***BY 2025---Update Visitor Center Facility –A proposal for a new indoor/outdoor facility. Solar and LEED certified. Update master plans for visitor parking, shuttle facilities, trailheads, day-use and conservation education facilities.***



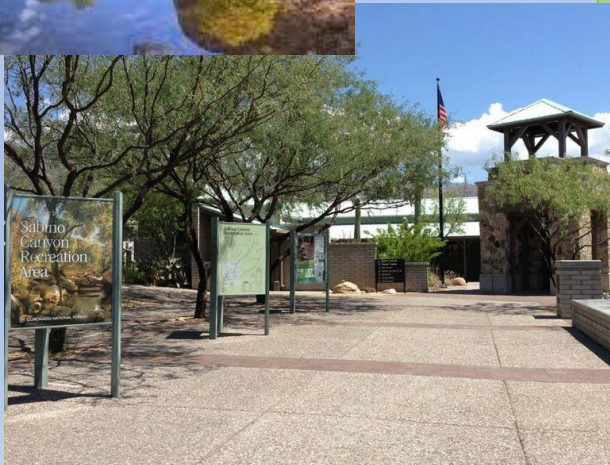


FRIENDS OF SABINO CANYON

*...Just Imagine...*







## *“Re-Imagine” Guiding Principles-*

- ❖ *Conserve ‘natural and financial resources’ through sustainable design and development.*
- ❖ *Protect the ‘cultural, historic, and ecological character’ of the Canyon.*
- ❖ *Enhance the ‘affordable experience’ of Sabino Canyon.*



FRIENDS OF SABINO CANYON

- Also Included:
- USFS Offices to a new properly designed space.
  - Canyon Partner / USFS Offices, Storage, and Back of House Needs.

# WHAT IF?

PLAZA EVENTS AND CANYON VIEWING

PERMANENT AND TEMPORARY EXHIBITS

BETTER CONNECTION TO TRAM ACCESS FROM VISITOR CENTER

LECTURES, MEETING AND ENTERTAINMENT SPACE

INDOOR AND OUTDOOR CAFÉ SPACE

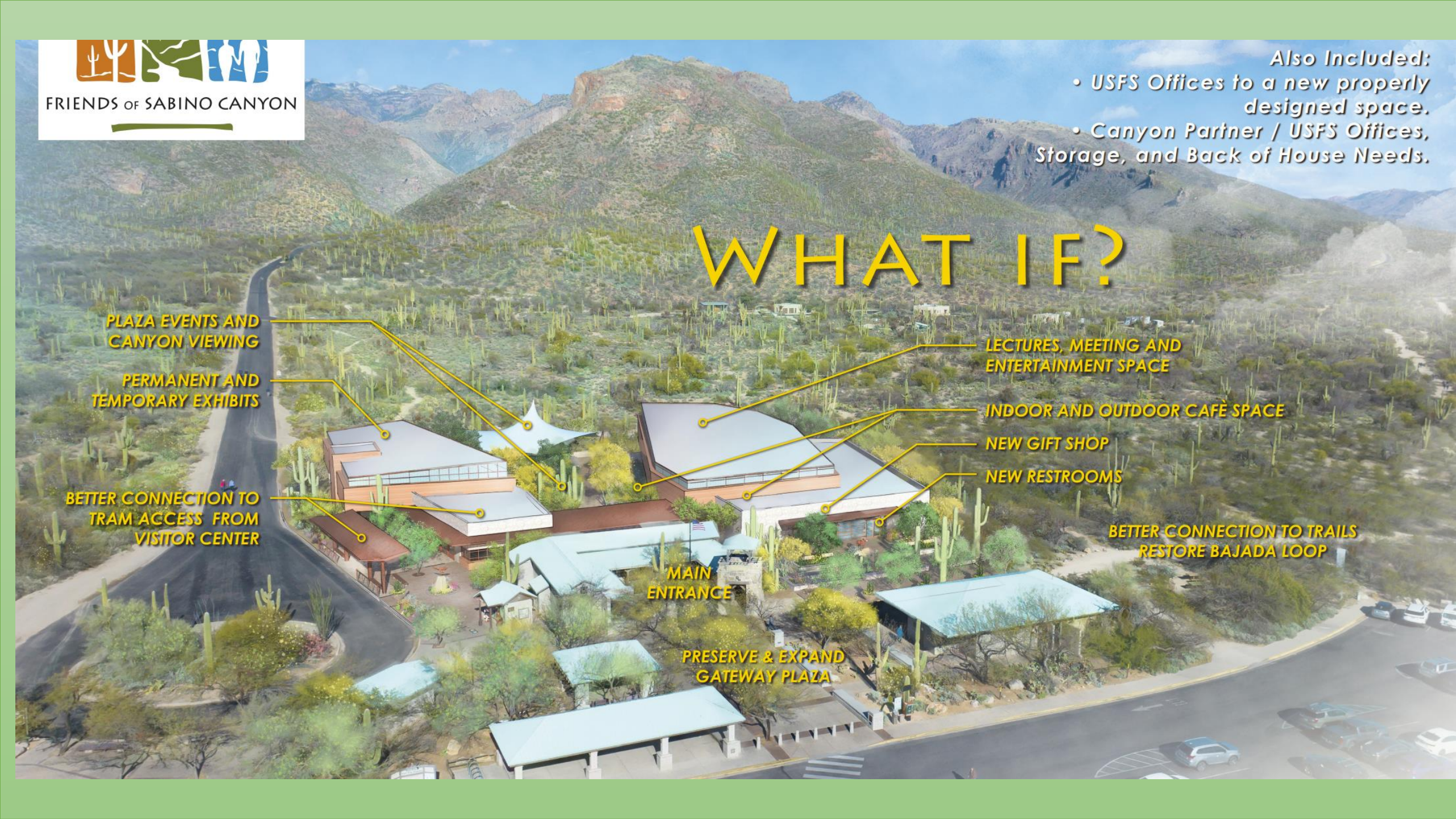
NEW GIFT SHOP

NEW RESTROOMS

BETTER CONNECTION TO TRAILS  
RESTORE BAJADA LOOP

MAIN ENTRANCE

PRESERVE & EXPAND GATEWAY PLAZA



*Is this the final design?*

*NO*

*Are these the final uses?*

*NO*

*We have an extensive  
master planning  
process to go through...*



## *Why is FOSC doing this?*

- ❖ *Jump start the 'Re-Imagination of the Sabino Canyon Visitor Center'-first identified as a need in the 2015 USFS Recreation Plan*
- ❖ *Give the community and Canyon users a 'hands on' role in the planning*
- ❖ *Consistent with the **Mission of Friends to Conserve, Protect, and Enhance the Sabino Canyon Recreation Area***







FRIENDS OF SABINO CANYON

# SABINO CANYON

*'Visitor Center - Re-imagined'*





*Sabino Canyon –  
‘Infrastructure &  
Visitor Use’*



*Santa Catalina District Ranger- Don DelMastro*

# *Sabino Canyon*

## *Wildland Urban Interface (WUI)*

*Typically used with fire but the zone of transition between wilderness (unoccupied land) and land developed by human activity.*





## *Sabino Canyon – Visitor Use*



USFS began  
managing Sabino  
Canyon in 1908



Visitor Center  
constructed in 1963



Over 1.2 million  
visitors a year



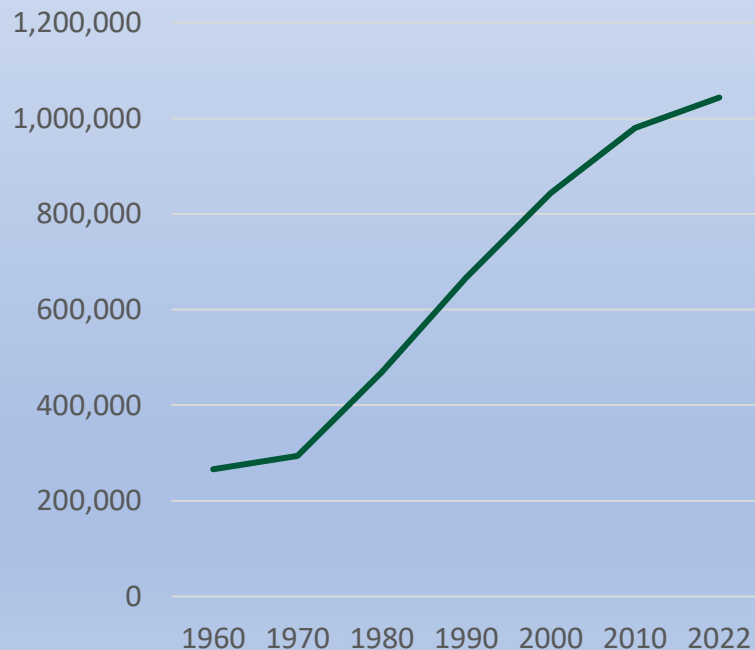
Peak season sees  
4,500 visitors a day



# Sabino Canyon – Economic Impact

- Pima County has grown **4 X** since the original visitor center built...
- Average trip spending by visitor is **\$953**...
- **25.9%** of visitors come from 500 miles away...
- **7.3%** of which is international...

Pima County Population  
Growth



*Facilities Too Small for Visitors and Employees*




*Outdated Infrastructure*



## *Some Challenges- Sabino Canyon*

*Need to Update Exhibits and Interpretive Information*





*Look forward to  
seeing you in  
the Canyon....*



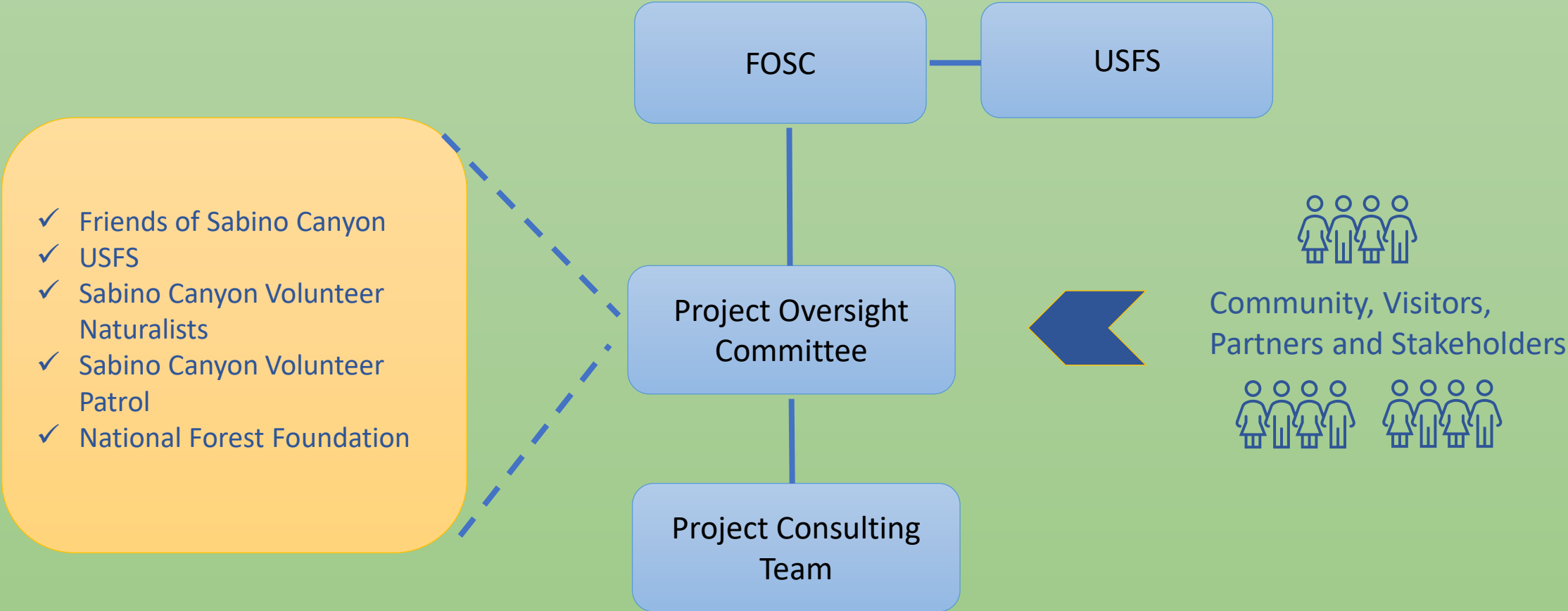
FRIENDS OF SABINO CANYON

# SABINO CANYON

*'Visitor Center - Re-imagined'*

What's next?

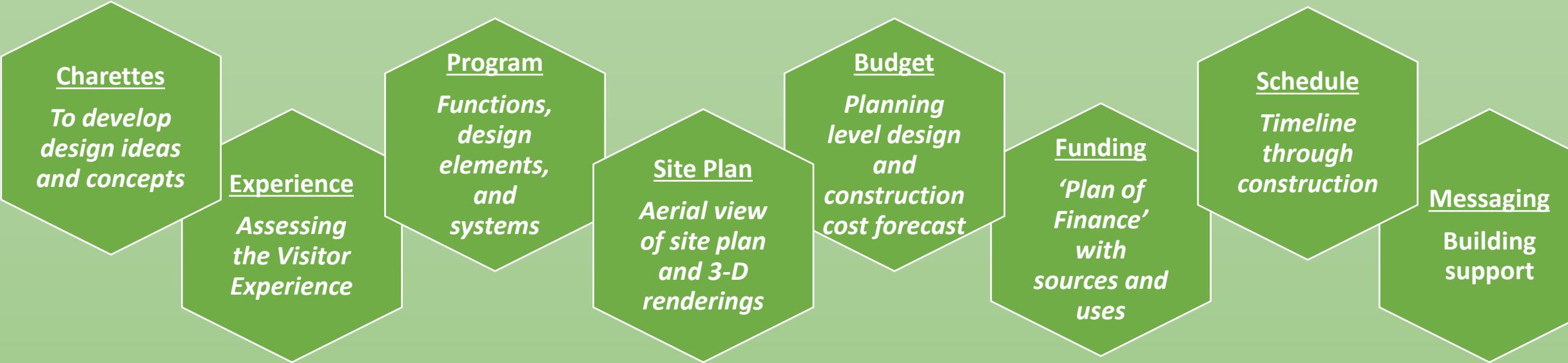
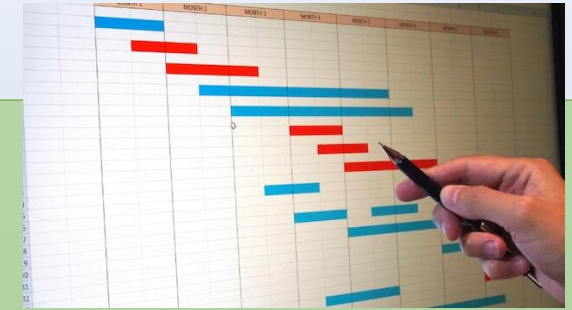
# The planning structure...



# What does the process look like?

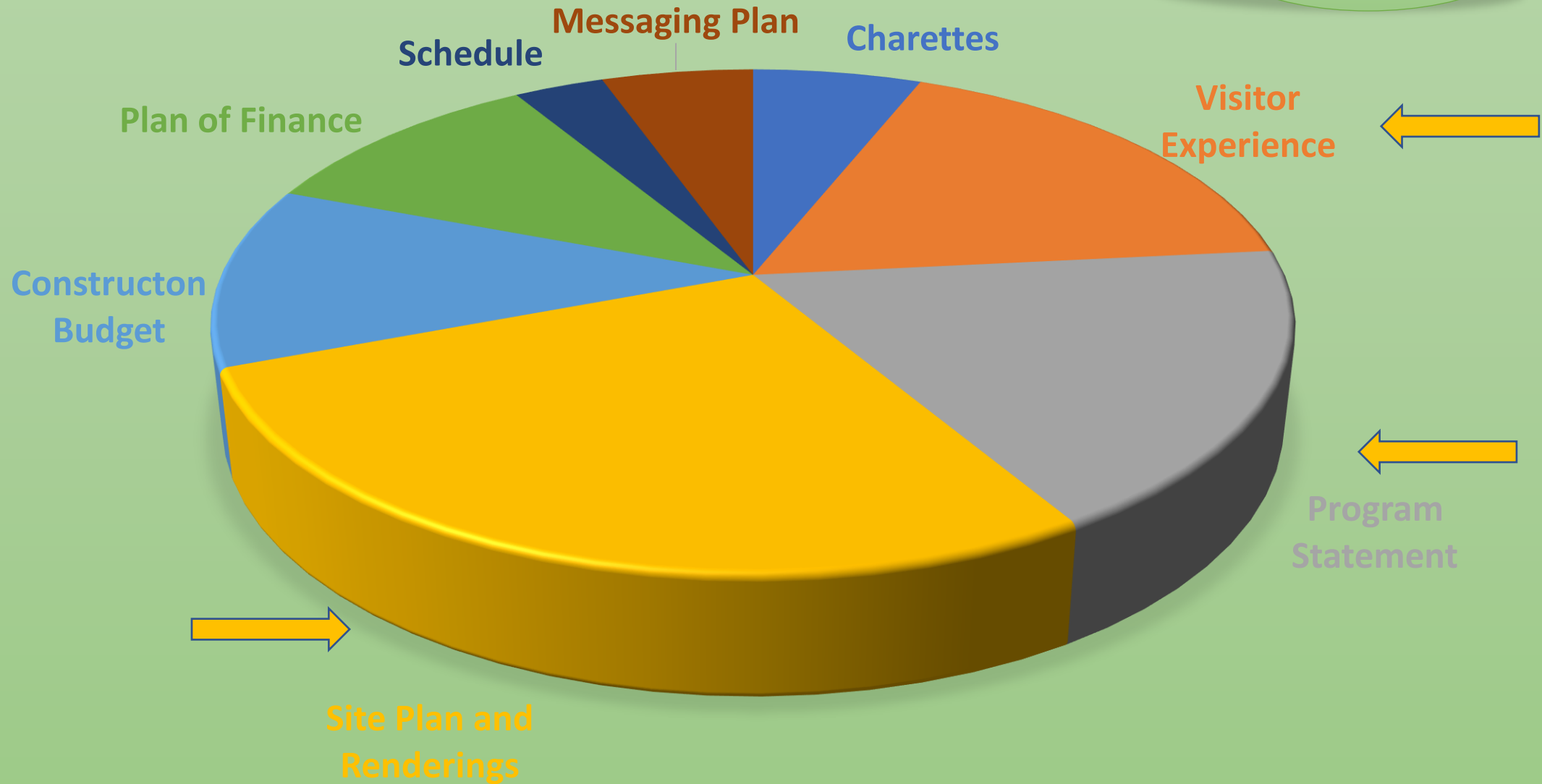
Construction Budget

Cost Code	Activity	Labor Costs	Material Costs	Fixed Costs	Budget
1000	Administrative Expenses	\$0.00	\$800.00		\$19,850.00
1001	Rent (Project Office)	\$0.00	\$0.00		\$10,750.00
1002	Rent (Warehouses)	\$0.00	\$0.00		\$5,550.00
1003	On-Site Office Costs	\$0.00	\$0.00		\$2,600.00
1004	Printing (Blueprints, etc.)	\$0.00	\$800.00		\$0.00
1005	Utilities	\$0.00	\$900.00		\$0.00
2000	Equipment Rentals	\$0.00	\$34,000.00		\$19,000.00
2001	Vehicles	\$0.00	\$7,800.00		\$3,000.00
2002	Excavation Machinery	\$0.00	\$15,000.00		\$5,000.00
2003	Other Heavy Machinery	\$0.00	\$9,900.00		\$3,500.00
2004	On-Site Generator	\$0.00	\$2,200.00		\$0.00
2005	Equipment Insurance	\$0.00	\$0.00		\$7,500.00
3000	Scope 1: Concrete Foundation	\$25,300.00	\$37,000.00		\$5.00
3001	Site preparation	\$5,500.00	\$4,000.00		\$0.00
3002	Excavation	\$12,800.00	\$9,000.00		\$0.00
3003	Concrete foundation pour	\$7,000.00	\$23,000.00		\$0.00
3004					
4000	Scope 2: Structural Steel Erection and Exterior Work	\$58,750.00	\$107,000.00		\$0.00
4001	Mobile structural steel	\$700.00	\$0.00		\$0.00
4002	Erect structure (Floor 1)	\$23,000.00	\$40,500.00		\$0.00
4003	Erect structure (Floor 2)	\$23,000.00	\$42,000.00		\$0.00



# What is the Master Plan budget?

\$250,000





*How will it be funded?*



# Then what happens after the Master Planning?

Secure Construction  
Funding

Detailed  
Construction  
Drawings



Competitively  
Bid

Construct



Enjoy!



Operational Considerations





*Will we have challenges along  
the way?*

*Yes - and we are committed to  
overcoming them...*





FRIENDS OF SABINO CANYON

*...Just Imagine...*



# *USFS-FOSC Agreement*



*Share your comments before you leave  
on a comment card...*

*Or*

*...write us at [friends@sabinocanyon.org](mailto:friends@sabinocanyon.org)*



*See you on the trail...*



FRIENDS OF SABINO CANYON